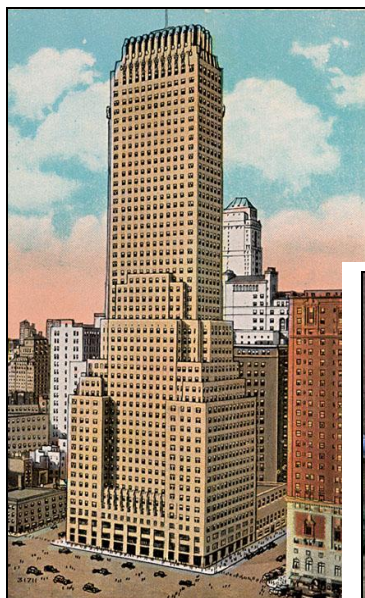


## INTRODUCTION TO JONATHAN HENRY, PH.D.

I was born in New York City in the borough of Queens. My dad was an engineering professor at Columbia University there, and early in his career we moved quite a bit. When I was 2 we moved to Michigan, then 10 years later, to Alabama. Since then I have lived in six of the eleven states of the Old South.



*The Chanin Building in New York City Where My Grandfather Worked. It Was the First Art-Deco Skyscraper and Is Now a Noted Historical Landmark*



*Me as Professor of Natural Science at CCC Since 1995*



*Where We Lived in New York City. It Was Built in 1922; Now Small Condos There Are Going for Half a Million*

I have four sisters living in various States. The Lord used my dad early in my life to give me a deep appreciation for engineering and science generally. My mother gave me a deep love of music which I enjoy for relaxation.

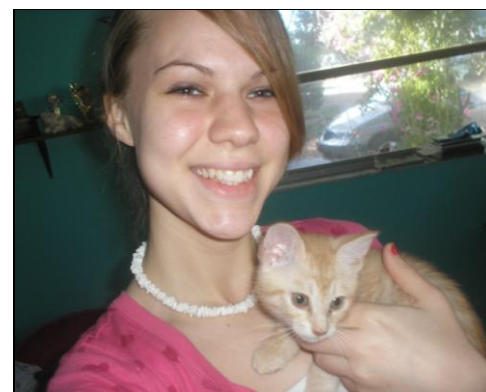
My wife Sharon and I moved to Clearwater in 1995 with our four children. In 2008 our oldest daughter Faith was married to Dan Zapata, whom she met as a student at CCC. The Lord has been so good to us. We try to remember to be grateful each day for His provision and how He has led us.



*Antebellum Mansion in Aberdeen, Mississippi, Where I Worked for Conoco Chemicals. This is "Holiday Haven," Built in 1850 and Still a Family Residence*

I started college majoring in Biology, then switched to Chemistry. After earning a Bachelor of Science degree from the University of Alabama, I studied for a Master's degree in Chemical Engineering. Following a period of work as an engineer for Conoco Chemicals (now owned by Phillips Petroleum), the Lord called me into teaching, presently at Clearwater Christian College (CCC) in Florida. To be ready for the academic world, God then led me to the University of Kentucky where I earned a doctorate in Chemical Engineering.

*Our Youngest Daughter Charity with One of Our Family Cats, Isaac.*



*Below: CCC Science Division Faculty Christmas Party*

